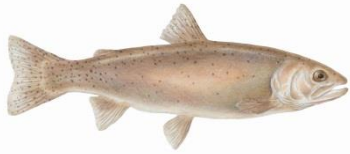


# Lake Tahoe Native Fish Identification Guide



## Lahontan cutthroat trout (*Onchorynchus clarki henshawi*)

**Identification:** Red colored fins and opercula. Dark spots on body, dorsal and caudal fins. To 39 in (99 cm).

**Preferred Habitat:** Lakes and rivers. Can be found at depths up to 1000ft/300 m.

\*No longer found in Lake Tahoe naturally because of introduction of Lake trout, overharvest, and hybridization with nonnative rainbow trout.



## Mountain whitefish (*Proposium williamsoni*)

**Identification:** Uniformly silver in color with adipose fin. To 22 in (57 cm).

**Preferred Habitat:** Lakes (to depth of at least 30 ft/10 m).



## Lahontan redband shiner (*Rhinichthys egregius*)

**Identification:** Distinctive streak along side; red in breeding males; rosy colored in females. To 6 in (17 cm).

**Preferred Habitat:** Nearshore habitats in mountain lakes and rivers.



## Lahontan speckled dace (*Rhinichthys osculus robustus*)

**Identification:** Covered with dark speckles and splotches. A frenum (flap of skin) attaching snout to upper lip. To 4 in (11 cm).

**Preferred Habitat:** Rocky shoreline.



## Tahoe sucker (*Catostomus tahoensis*)

**Identification:** Native to the Lahontan Basin. Deep medium lower lip notch. Breeding males have bright red stripe along side. To 24 in (61 cm).

**Preferred Habitat:** Variable but commonly in large lakes .



## Paiute sculpin (*Cottus beldingi*)

**Identification:** Drab coloration with a brindled pattern. Dorsal fins separate to base. To 5 in (13 cm).

**Preferred Habitat:** Rock riffle streams where flowing water is ample.



## Tui chub (*Gila bicolor*)

**Identification:** Small round fins. Small terminal/slightly subterminal mouth. To 17 in (45 cm).

**Preferred Habitat:** Quiet, vegetated area.

## Naturalized Fish\*:

\* Nonnative species established outside of their native range that reproduce without human assistance.



### Kokanee salmon (*Onchorynchus nerka*)

Bright red body and green head when spawning



### Rainbow trout (*Onchorynchus mykiss*)

Pink to red stripe on side



### Lake trout/ Mackinaw (*Salvelinus namaycush*)

Cream spots on dark green to grey head, body, dorsal and caudal fin



### Brook trout (*Salvelinus fontinalis*)

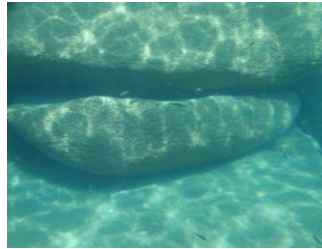
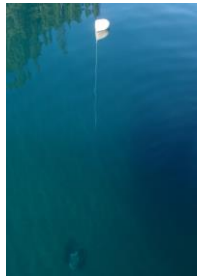
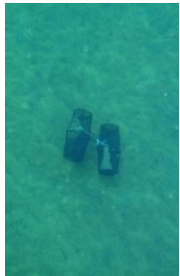
Blue halos around pink or red spots on side



### Brown trout (*Salmo trutta*)

Red and black spots on head and body

- Nearshore seasonal native fish monitoring has occurred from 2008 to present.
  - 2 minnow traps set together at depths 3, 10, 20, 30, 40, and 50 meters.
  - Sampling occurs once a month at 10 locations.
- Lakewide snorkel survey conducted in 2009.
- Observed decrease in native fish distribution and abundance.



Paired minnow traps at 10 meters



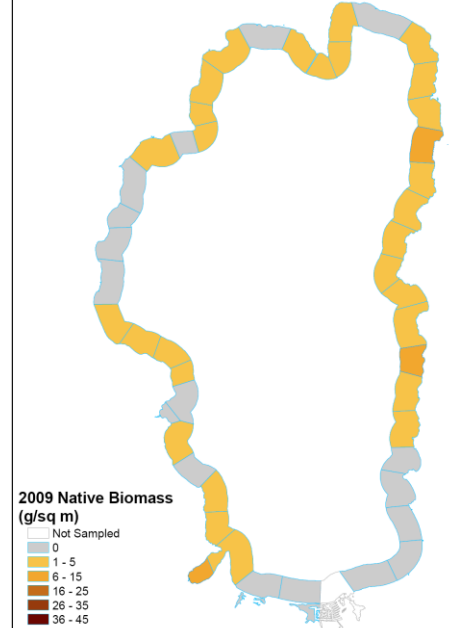
1988-89 Native Biomass (g/sq m)

- Not Sampled
- 0
- 1 - 5
- 6 - 15
- 16 - 25
- 26 - 35
- 36 - 45

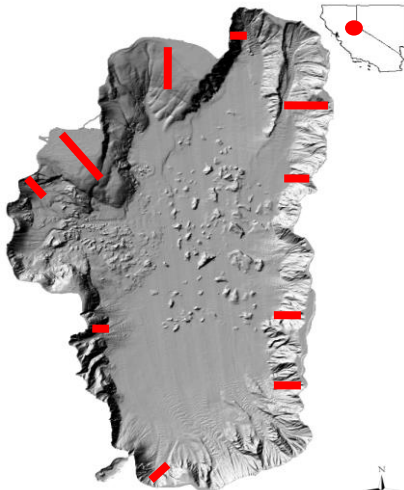


2009 Native Biomass (g/sq m)

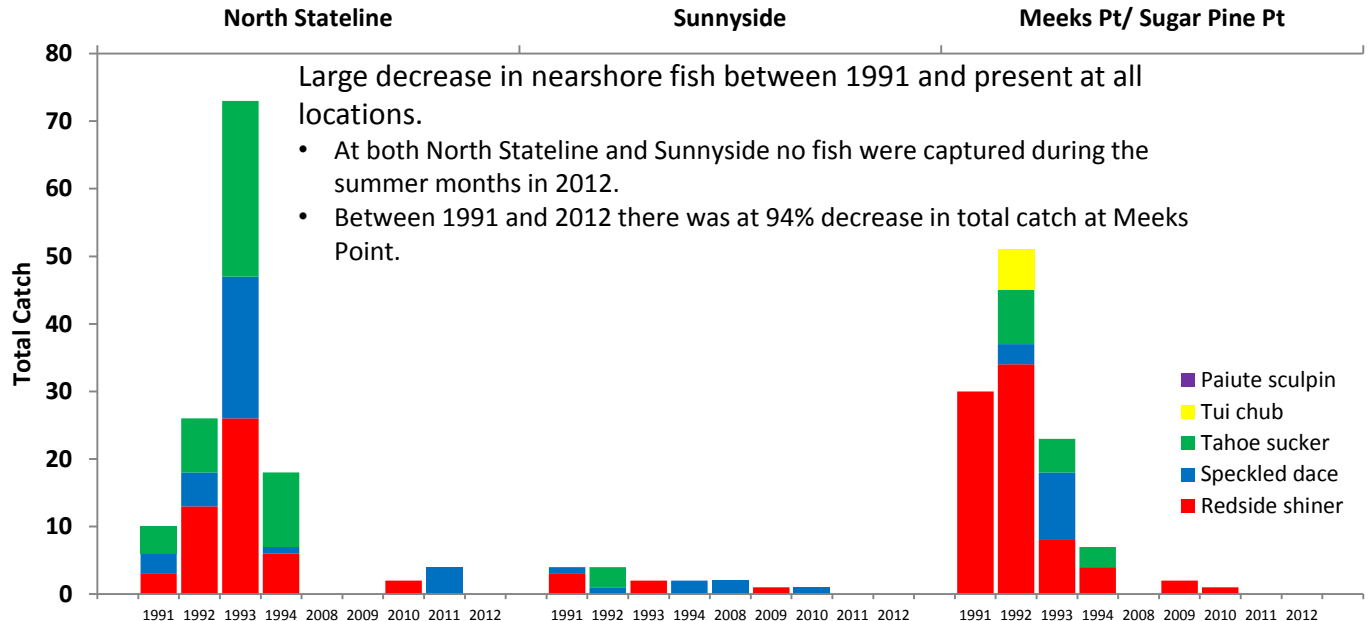
- Not Sampled
- 0
- 1 - 5
- 6 - 15
- 16 - 25
- 26 - 35
- 36 - 45



Over half (58%) of the surveyed sites show decline in native fish density.



Projects sponsors and partners:



Large decrease in nearshore fish between 1991 and present at all locations.

- At both North Stateline and Sunnyside no fish were captured during the summer months in 2012.
- Between 1991 and 2012 there was a 94% decrease in total catch at Meeks Point.

- Paiute sculpin
- Tui chub
- Tahoe sucker
- Speckled dace
- Redside shiner